

# ALLEGRO RED 340

2021

TIFFIN



2021 ALLEGRO RED 340

THE POWER TO MOVE YOU  
IN MORE WAYS THAN ONE.



38 LL with G1 Slate Grey

Stylish and smartly appointed, the new 2021 Allegro RED 340 is loaded with bumper-to-bumper luxury, yet still remains affordable. And when you're ready to hit the road, the powerful 340 HP Diesel Engine is too, propelling you towards your next adventure. Its inviting features make it the perfect home away from home when you arrive, and a pleasure to drive wherever you may be headed. Discover new places, an impeccably smooth ride, and surprising, comfort-oriented design, all in one premium motorhome. The new 2021 RED 340. Elegance has never been so empowering.

Clockwise from top: Living area; Freightliner steering wheel and dashboard; Bedroom; Kitchen. All interiors shown are 38 LL with Natural Alder cabinets, Khaki Shade décor.

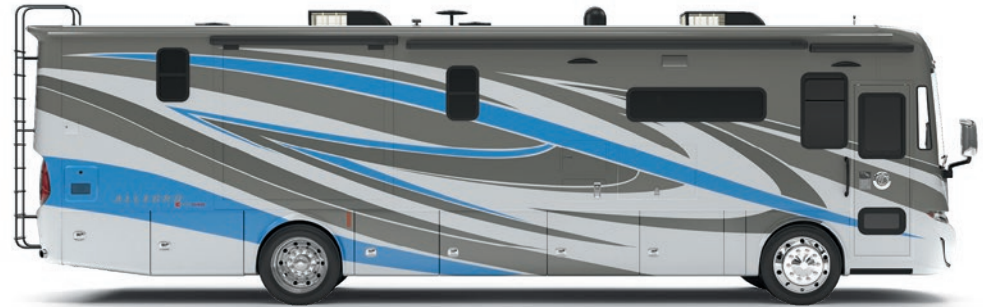


## Premium Paint System

Our eight-step full-body paint system features premium grade paints sealed with three layers of superclear coat with ultraviolet protection. An additional layer of high-performance film protects the front of the coach and select areas.



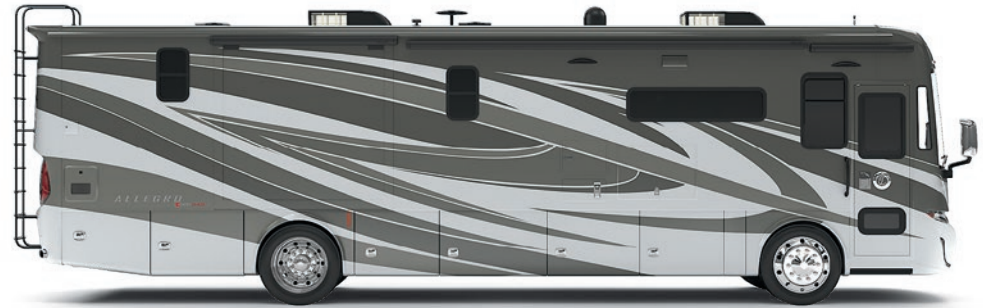
G1 AUTUMN



G1 GLACIER BLUE



G1 BARCELONA



G1 SLATE GRAY



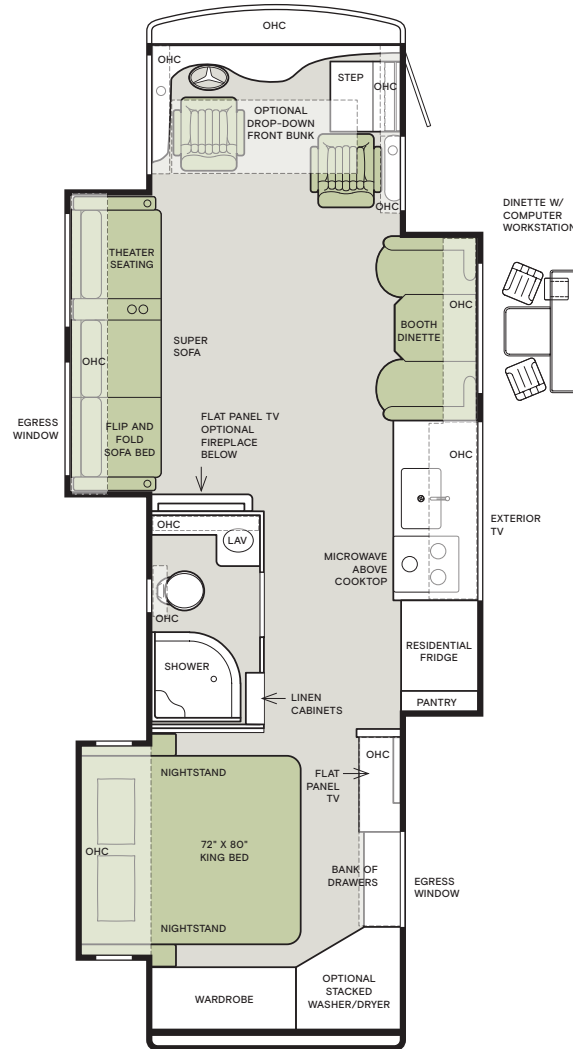
The design of every Allegro RED 340 floor plan must meet four essential criteria: Maximum space, Optimal organization, Relaxation plus, and Elegant atmosphere. Tiffin's MORE Plans offer your family the most comfortable layout for life on the road.

If optional furniture combinations are selected, window locations may vary from diagram shown.

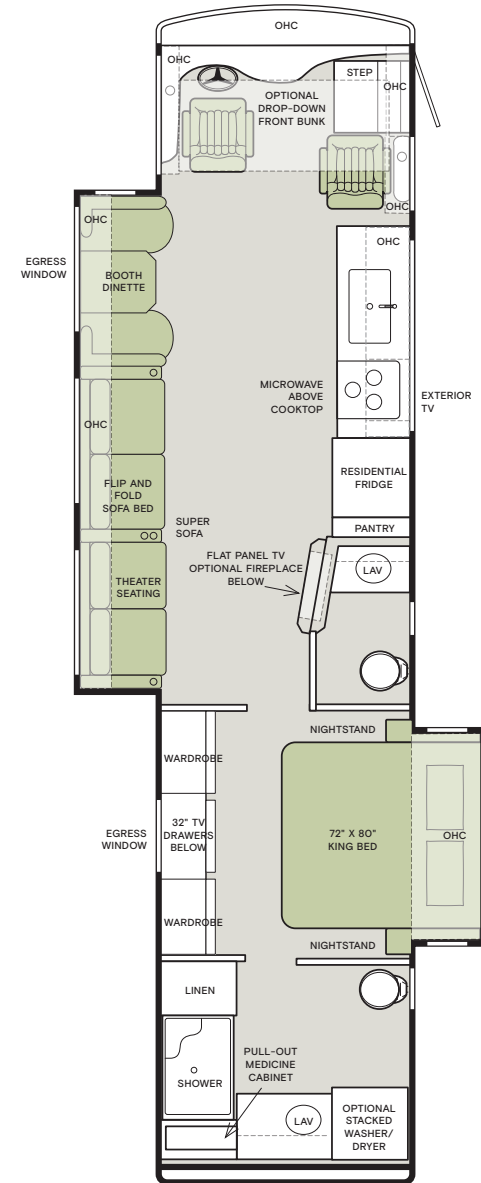
All options may not be available in every model. Because of progressive improvements and specifications, standard and optional equipment are subject to change without notice or obligation.

For a complete and up-to-date list of available options and specifications, visit [tiffinmotorhomes.com](http://tiffinmotorhomes.com).

33 AL



38 LL



## Interior Décor

Make your experience on the road all your own. Express yourself by choosing the interior appointments such as cabinet finishes, flooring, and décor ensembles for every part of your motorhome. In the 2021 Allegro RED 340, you'll be able to travel in style no matter where you go.

## CABINETS



NATURAL ALDER

## ULTRALEATHER



BELGIUM (S)



WHITE MAPLE (O)

## FLOORING



SAND CASTLE (S)

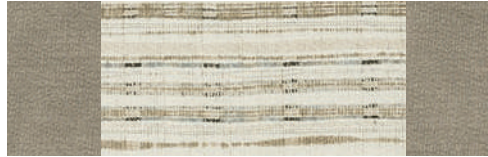
Matte Finish Tile



SEA OAT (O)

Matte Finish Tile

## KHAKI SHADE



WINDOW TREATMENT



BACKSPLASH



COUNTERTOP



LIVING ROOM



MASTER SUITE

## RESORT TAN



WINDOW TREATMENT



BACKSPLASH



COUNTERTOP



LIVING ROOM



MASTER SUITE

## Specifications

### CHASSIS

- Cummins® B6.7
- Allison® 2500 MH 6-speed Automatic Transmission with Lock-up
- Peak HP 340 HP @ 2,600 RPM
- Peak Torque (lb—Ft. Max Net) 700 @ 1,600 RPM
- Straight Rail Chassis Frame
- Air Ride Suspension

- Full Air Brakes
- Exhaust Brake
- Four Aluminum Wheels
- Air Leveling System

	33 AL	38 LL
Freightliner® Rear Engine Diesel Chassis	S	S
GAWR—Front	10,000 lb	10,410 lb
GAWR—Rear	18,000 lb	17,590 lb
GVWR	28,000 lb	28,000 lb
GCWR	33,000 lb	33,000 lb
Wheel Base	198"	252"
Tire Size	255/80R22.5	255/80R22.5
Fuel Tank (gal.) — Dual Fuel Fill	90	90
DEF Tank <sup>1</sup> (gal.)	10	13
Alternator Amps	130	160
Hitch Rating <sup>2</sup>	5,000 lb	5,000 lb
Tire Pressure Monitoring	—	S

<sup>1</sup> Diesel Exhaust Fluid (DEF) is the active component used in Selective Catalytic Reduction (SCR) engines to reduce nitrogen oxide emissions by 90% to meet EPA standards.

<sup>2</sup> Maximum Trailer Weight is dependent on the loading and towing variables which include the GVWR, GAWR, and GCWR, as well as adequate trailer brakes.

WEIGHTS AND MEASURES	33 AL	38 LL
Overall Length (approximately) <sup>3</sup>	35'2"	39'6"
Overall Height (maximum)	12'10"	12'10"
Interior Height	84"	84"
Overall Width <sup>3</sup>	101"	101"
Interior Width	96"	96"
Fresh Water (gal.)	70	70
Black Water (gal.)	50	50
Grey Water (gal.)	65	65
LPG Tank (gal.; can only be filled to 80% capacity)	24	24
Basement Storage (cubic ft—app.)	71	118
Minimum Garage Height	14'	14'

<sup>3</sup> The approximated coach width and length does not include side view mirrors and rear ladders.

### PLUMBING AND ELECTRICAL

- 8.0 kw Onan® Generator
- Four 6 V House Batteries
- 50 Amp Service
- Two Low-profile Roof ACs with Heat Pumps (15 K BTUs)
- Truma® Gas Continuous Water Heater
- 2000 Watt Pure Sine Wave Inverter
- Tank Level Monitoring System
- Heated Holding Tank Compartment
- Prep for Satellite
- Prep for Solar Panel
- CB Antenna
- Spyder® Multiplex System

PLUMBING AND ELECTRICAL OPTIONS	33 AL	38 LL
Wi-Fi Ranger	O	O
In-motion Satellite	O	O

### EXTERIOR

- Fiberglass Front and Rear Caps
- Front Cap Protective Film
- Tinted One-piece Windshield
- Horizontal Mounted Mirrors
- Heated Power Mirrors
- Exterior Patio Light
- Power Patio Awning
- Patio Side Exterior TV
- Awning(s) over Slide-outs
- Double Electric Step
- Full-body Paint
- Convenient Access Doors with Gas Shocks
- Single Handle Lockable Storage Door Latches
- Charcoal Carpet Cargo Storage Walls

### INTERIOR

- Soft Touch Vinyl Ceiling
- Flat Panel TV in Entertainment Center with Soundbar
- Treated Carpet and Fabrics
- Ball Bearing Drawer Slides
- Solar and Privacy Shades
- Power Roof Vents
- Smoke Detector
- Carbon Monoxide Detector
- LED Lighting
- LPG Leak Detector
- BluRay® Player

INTERIOR OPTIONS	33 AL	38 LL
Central Vacuum Cleaner	O	O
Handcrafted Cabinetry	Natural Alder	S
Fabric Suites	Khaki Shade	O
	Resort Tan	O
Floor Tiles	Sand Castle (Matte Finish)	S
	Sea Oat (Matte Finish)	O
Ultraleathers	Belgium	S
	White Maple	O

### DRIVER'S COMPARTMENT

- Tilt and Telescoping Steering Wheel
- Cruise Control
- One Drawer in Dash
- Power Suspended Adjusted Fuel and Brake Pedals
- Lighted Instrument Panel
- CD Player and AM/FM Stereo
- Power Solar and Privacy Windshield Shades
- Fire Extinguisher
- Ceiling Mounted Speakers
- In-dash Navigation System
- Manual Solar and Privacy Shades on Side Windows
- Six-way Power Driver and Passenger Seats
- Color Back-up Monitor

DRIVER'S COMPARTMENT OPTIONS	33 AL	38 LL
Overhead Front Bunk	O	O

### LIVING AREA/DINETTE OPTIONS

	33 AL	38 LL
Ultraleather Booth Dinette/Sleeper on Passenger Side	S	—
Ultraleather Booth Dinette/Sleeper on Driver Side	—	S
Ultraleather Super Sofa on Driver Side	S	S
Dinette with Computer Workstation on Passenger Side	O	—
Fireplace	O	O

### KITCHEN

- Large Kitchen Sink with Single Lever Faucet
- Solid Surface Galley Countertop
- 3-burner Cooktop
- Convection Microwave
- Residential Refrigerator

KITCHEN OPTIONS	33 AL	38 LL
Oven with Cooktop/Convection Microwave	O	O

### BEDROOM

- Flat Panel TV
- Solar/Privacy Shades
- Memory Foam King Mattress (72" x 80")

BEDROOM OPTIONS	33 AL	38 LL
Stacked Washer/Dryer	O	O

### BATHROOM

- Medicine Cabinet
- Molded One-piece Fiberglass Shower
- Roof Vent Fan

Because of progressive improvements and specifications, standard and optional equipment are subject to change without notice or obligation. For a complete and up-to-date list of available options and specifications, visit [tiffinmotorhomes.com](http://tiffinmotorhomes.com).



1

YEAR OR 12,000 MILES  
LIMITED WARRANTY

5

YEAR OR 50,000 MILES  
DELAMINATION  
LIMITED WARRANTY

10

YEAR OR 50,000 MILES  
UNITIZED CONSTRUCTION  
LIMITED WARRANTY

1

YEAR COACH  
ROADSIDE SERVICE

∞

ONGOING  
CUSTOMER SUPPORT

©2020 Tiffin Motorhomes, Inc. Allegro®, Allegro Breeze®, Allegro RED®, Phaeton®, Allegro Bus®, Zephyr®, Wayfarer®, Roughing It Smoothly®, Open Road®, PowerGlide®, and Pusher® are registered trademarks of Tiffin Motorhomes, Inc. All rights reserved.  
For all information concerning the limited warranty provided by Tiffin, please refer to the full written limited warranty set forth on the Tiffin website or held by our authorized dealerships. Please note, some interior furnishings not included.

FOR PARTS & SERVICE CALL 256.356.0261 OR VISIT [TIFFINMOTORHOMES.COM](http://TIFFINMOTORHOMES.COM)

105 2ND ST NW RED BAY, AL 35582 [f](#) [t](#) [i](#) [p](#)